

Little Bench

Little Bench is one of a pair of semi-detached bungalows, purpose built under the National Accessibility Scheme guidelines with complete level access from the private drive where you can park.

Pre Arrival

- We have a website – www.ourbench.co.uk which provides details of the cottages, photos and information about local amenities.
- Enquiries are welcome by email, phone or post.
- Booking confirmation is by completed booking form, online or returned by post. The Booking Form and Terms and Conditions can be supplied in a large font if required.
- Guests will receive directions a welcome letter and their key code once the final payment has been received. These can be supplied in a large font if required.
- Nearest shop is about ¼ mile by car or foot.
- Nearest town is Lymington approximately two miles away.
- The nearest railway station is at Lymington. The nearest mainline (London Waterloo) railway station is at Brockenhurst, which has a lift to all platforms.
- There is a bus stop outside the cottages on Lodge Road.
- Accessible Taxis require booking, we have included details on our website.

Arrival & Car Parking Facilities

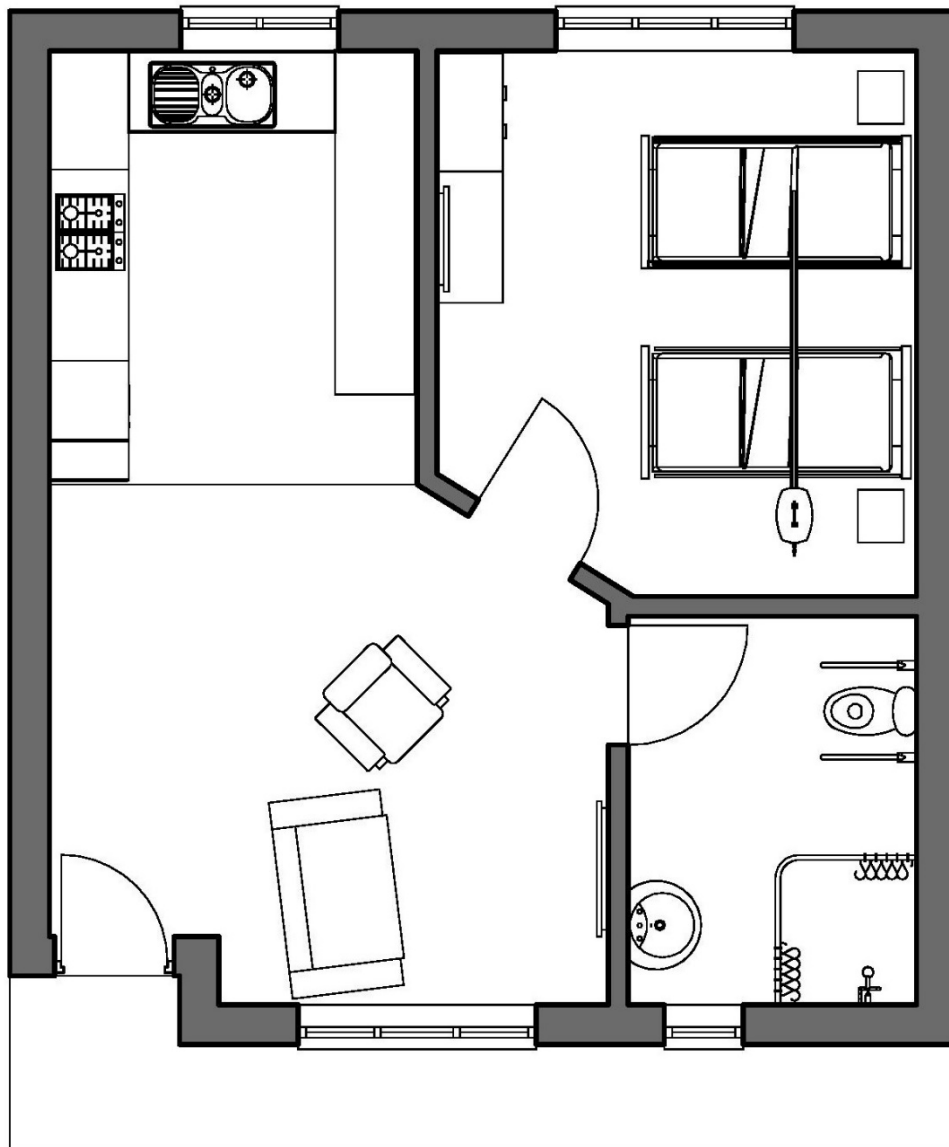
- You will find the cottage up a private driveway between number 9 and number 11 Lodge Road. Drive up and there are two painted parking bays at the top with turning space opposite your holiday home. Turning may be tight if your vehicle is oversized. If you need to park right outside your door you may do so to unload but please park in a bay as soon as possible, so access is left for both cottages. If you have more than one car – please leave the 2nd car in the road, unless alternative arrangements have been agreed in advance.
- Access to each cottage is by a coded lock, where you will find your key. Guests are notified of their code in advance.
- The owners, or their representative, are normally available via a phone call to assist with any enquiries, and they will try and look in during your stay.
- Information is provided with details of local services and user information for the equipment within the cottage.
- Once the door is unlocked, we an internal turnlock as recommended by fire regulations – so you do not need the key to lock the door on the inside – we have installed a small alarm which can be turned on – with the small switch - this will then make an audible noise if anyone opens the door – ideal to warn the door is opening, if this is an increased risk. If you are unsure how it works please ask for a demo. It will be set to off when you arrive.

Outdoor Facilities

- Outside Little Bench there is a shared seating area with outdoor furniture to the front and rear of the property.

Our Bench – New Forest Accessible Holiday Cottages – Access Statement – Little Bench

- A small green outbuilding is available for charging scooters and power chairs and holds a shared tumble drier, can be found at the side of the cottage along with the rubbish bins. There is an information sign here about what can be recycled.
- There are no steps on entering, we have a low threshold door designed for easy access
- The bungalow backs on to a sports field where the occasional cricket and football matches take place



Inside your Cottage

- Little Bench is completely level with no ramps or steps anywhere inside the building.
- The outside door has a clear access of 790 mm (31½ inches) and all internal doors are 860 mm (35 inches).

Our Bench – New Forest Accessible Holiday Cottages – Access Statement – Little Bench

- All lights and plugs are situated in easy reach positions.
- The floor is laid to short pile carpet with gripped vinyl flooring in the wet room and kitchen spaces.

Bedrooms & Sleeping Areas

- The master bedroom has a wardrobe, chest of drawers and bedside tables and side lights and wall mounted colour television with freeview and remote.
 - There is one konturmatic profiling / carers bed, which is height adjustable - min height - 560 mm, max height 880mm. This bed has adjustable bed rails fitted which you can raise or lower to suit, they can also be removed at your own risk. This bed is nearest the window. The mattress is 2m long.
 - One standard electric foot and head riser bed. This bed is also 520 mm high
 - These beds can be pushed together to make a large king size bed on request, with the height adjustable bed on left if facing the headboard. If a king, both beds have separate fitted sheets because of the movement of the bed.
 - There is a ceiling hoist provided which moves across the centre of both beds, it is a Freeway hoist, with a two point spreader bar. It is suitable for up to 130 kilos.
- All beds have comfortable memory form mattresses, designed to relieve pressure sores, and to move with the beds – they are supplied with duvets and pillows and are made ready for your arrival. Note: duvets are non-feather, linen is cotton or polycotton. All beds have a recommended maximum weight of 21 stone (133kg).

Shower-room / Wet Room / WC

- The fully accessible wet room is completely level, the controls on the shower are easily reached.
- The toilet has drop down hand rails either side and space for lateral transfer. Hand rail height 735mm (29 inches)
- The toilet is a standard height toilet - 420mm high (16.5 inches). A separate raised toilet seat (with and without a frame) is available on request, and wheeled shower chairs can be used over the toilet if required.
- The wash hand basin is on a gas cylinder which means it can be raised or lowered into a comfortable position for washing.
- A heated towel rail is provided.

Self-Catering Kitchen / Lounge Area

- Open plan kitchen / lounge dining area
- The open plan lounge and dining area has plenty of turning space with an electric riser/recliner chair and a 2-seater settee.
- To allow maximum turning space the dining table and chairs are folding with the chairs stored under.
- Wall mounted flat smart TV with internet access.
- The open plan fitted kitchen has lowered work surface at the hob and sink with wheel in open space under. Dual height worktops - 920 mm (36 inches) and 795 mm (31 inches)
- The electric oven, dishwasher, washing machine and fridge are all easily accessed.
- Plates, cutlery, glassware and cooking equipment is provided for 4 guests.

Our Bench – New Forest Accessible Holiday Cottages – Access Statement – Little Bench

Additional Information

- Our cottages have thermostatically controlled central heating.
- Our cottages have their own washing machine in the cottage – a shared tumble dryer is available in the green shed.
- Opposite the cottage is an outside water tap and an external electrical socket.
- The conversion has been carried out in line with the appropriate Building Regulations covering such items as suitability.
- Each cottage has sensor operated external lighting by its entrance.
- Each cottage has smoke detectors/alarms, and suitable fire extinguishers/blankets.
- Emergency lights are installed over front doors and bedrooms in all properties to ensure the door is lit in case of power failure.
- External doors in all cottages can be opened from the inside – there is a small alarm which can be turned on towards the top of the main door which can be set to go off if required.
- We are unable to accept dogs in this cottage.
- There is no land line in the Cottage and we recommend you bring a mobile phone with you, Wifi is included and you will find the password in the welcome guide.
- We are completely non-smoking and ask that you refrain from smoking in the grounds.

Extra Information

- Little Bench can offer guests a range of accessible equipment to make each stay more comfortable and enjoyable if required, from portable hoists (bring own sling) to wheelchairs, and shower chairs. Details are available on our web site and must be booked in advance of your stay.

For your safety

- Our beds and the electric riser/recliner chair can only take a maximum of 21 stone (133kg) in weight and the electric midi hoist 18 stone (114kg), if you need reinforced beds, chairs etc – then we are sorry, but we are unable to accommodate you at this time.